

10 Things to Know about 1517 Media

Spring 2024

1. **All Creation Sings** continues to expand and provide new resources for your congregation to connect with each other, your community, and our world through worship and prayer. With the use of pew editions in your church; accompaniment options on piano, organ, and guitar; intergenerational activities and sessions with **Gather Together**; and **Kids Celebrate** booklets for the youngest in your church, you can help support the rhythms of the whole church year and give extra attention to themes of healing and wholeness, creation care, justice and peace, praise and lament. augsburghfortress.org/allcreationsings
2. The Spanish-language **Oye Mi Voz: Un Libro de Oraciones para la Prisión** joins the popular **Hear My Voice: A Prison Prayer Book** in supporting people in the criminal justice system and those who minister to them. This collaborative effort between the ELCA and Augsburg Fortress encourages all in the criminal justice system to spend time in prayer, trusting in God's never-failing love for them and the whole world. augsburghfortress.org/prison-ministry
3. Augsburg Fortress released the first two books in its new Mouth House series. Every synod staff and congregational call committee can benefit from reading **Call to Allyship: Preparing Your Congregation for Leaders of Color** edited by Rev. Angela T. !Khabeb and featuring authors of color from throughout the ELCA. **Ashes to Action: Finding Myself at the Intersection of the Minneapolis Uprising** by Shari Seifert makes an excellent group read. augsburghfortress.org/mouthhouse
4. 1517 Media was awarded \$1.25 million from Lilly Endowment Inc. through its Nurturing Children through Worship and Prayer initiative. Funding will support research and the development of new resources for children, families, church leaders, and congregational education. Look for more news about this new multi-year program, **Unbridled Presence**.
5. Augsburg Fortress continues to publish vibrant music to engage the worshiping assembly. Our new choral music features an exciting anthem by Nathan Zullinger, "**God You Spin the Whirling Planets.**" **Living in Wonder** is the final collection of Susan Palo Cherwien's hymn texts, featuring 21 new assembly songs. Our free **Summer 2024 Music Clinics** feature musicians extraordinaire David Cherwien and Mark Sedio. augsburghfortress.org/music/summer-music-clinics
6. **Sparkhouse Digital** continues to support early childhood programming, Sunday school, confirmation, and youth ministry. New mini camps, leader supports, and other activities are added quarterly! Subscribers can access **Digital Activity Kits** that help congregations provide resources for use in the home or as a supplement to in-person faith formation activities. sparkhousedigital.com
7. Sparkhouse continues to release books supporting youth and young adults in their faith journeys. **Unscheduled Grace: 40 Reflections and Prayers for College Students** by campus pastors Katie Fick and Matt Marohl accompanies students through the changes, challenges, and joys of college living. **Unearthing Us**, the third collection of poetry by Joe Davis, will release in July along with a facilitator guide by Rev. Jia Starr Brown. wearesparkhouse.org
8. Fortress Press publishes scholarship that matters in the academy, the church, and the community. Recent releases include **Our Trespasses: White Churches and the Taking of American Neighborhoods**, a timely examination of how race, geography, policy, and religion have created haunted landscapes and uncomfortable truths. Also of interest to churches are **Luther for Everyone: Who He Was and Why He Still Matters** and **Bonhoeffer for the Church: An Introduction**. fortresspress.com
9. Our Broadleaf Books imprint expands the mind, nourishes the soul, and cultivates the common good. Recent releases include **Trash: A Poor White Journey**—a personal look at economic divides—**Psalms of My People: A Story of Black Liberation as Told through Hip-Hop**, and **A Faith of Many Rooms: Inhabiting a More Spacious Christianity**. broadleafbooks.com
10. Our Beaming Books imprint sparks the imagination and equips kids and families to live full and flourishing lives, together. Recent releases include **What If I Can't Explain God?, I Love You Mucho Mucho**, and **Everyday Brave**. beamingbooks.com

Want to learn more? Follow us on social media, sign up for our free e-newsletters, and connect with us at the Youth Gathering and Music Clinics this summer!

To learn more about the five imprints of 1517 Media, scan here to watch a video that we created for the 2022 Churchwide Assembly.



Allegheny Lutheran Social Ministries (ALSM)

2024 Message to the Allegheny Synod, ELCA

Greetings and blessings to each of you from myself and the leadership of ALSM!

ALSM is the only regional faith-based not-for-profit organization offering services that span the generations. ALSM has been responding to the needs of our communities for over 75 years.

You may have noticed a few changes around ALSM. Change is inevitable, and exciting, and allows for new growth and opportunities. Some of these changes include:

- The administrative office has moved to the campus of The Lutheran Home at Hollidaysburg and the Logan building has been sold. Team members at ALSM's administrative office have been working remotely for some time now. The sale of this asset will allow us to be good stewards of our resources and focus on our ministry, programs, and communities.

The new administrative mailing address is:
916 Hickory Street, Hollidaysburg, PA 16648

- For the first time in more than 25 years, ALSM has no debt.
- We have refreshed our brand and will be launching a new website this summer to better serve our customers and prospective customers.
- We are maximizing our resources to recruit and retain the most qualified team members.

The ALSM Board of Trustees named me as President and CEO of ALSM after I served as interim CEO. I am excited to see our organization's vision and plans set into motion. We will continue to honor ALSM's tradition of providing quality care and support to those served while continually evolving our services and offerings. We have a great team at ALSM. The future is bright!

Our team and I are excited about these changes that enable ALSM to continue our tradition of providing exceptional services well into the future.

At the heart of our mission is the ability to provide benevolent care for those whose resources have been depleted through unexpected changes in circumstances as a resident. Each year, approximately individuals who reside in ALSM's senior living communities are provided these funds--totaling more than \$1.7 million--in order to be able to live as independently as possible. We are grateful that no one has been asked to leave because of lack of funds.

We are truly blessed to be able to serve the needs of people throughout eight counties in Central PA with the following programs and services:

- **Senior Communities** (The Lutheran Home at Hollidaysburg and The Oaks at Pleasant Gap)
- **Rental Assistance Senior Housing** (Lutheran Commons at Berlin Pike and Lutheran Commons at Pleasant Gap)
- **Children's Services** (Head Start, Early Head Start, Family Center, Growing Years Early Learning Centers, Kid Stop before-and-after programs and PRE-K Counts programs)



"To serve people through a ministry of love, compassion, and mercy in the name of our Lord, Jesus Christ."

A few highlights from our programs and services include:

Senior Living Communities

- Volunteers are welcome on campus! We welcome you to become a volunteer. If you would like to discuss volunteer opportunities, please contact:

Hannah Myers – The Lutheran Home at Hollidaysburg, 814-696-4527

Sara Wright – The Oaks at Pleasant Gap, 814-359-2782

Blairmont Commons, Hickory Commons, and The Lutheran Home at Hollidaysburg

- Blairmont and Hickory Commons cottages offer residents a stress-free lifestyle. Exterior and interior maintenance is included in the cost, allowing residents the time to enjoy their favorite activities. The cottages are energy efficient and handicapped accessible so that residents may “age in place” in this secure neighborhood setting. These independent living residences attract individuals aged 55 and over. The waiting list for these cottages continues to grow.
- The bright and spacious apartments at Hillcrest are perched atop the famous “Double Dips” in historic Hollidaysburg, overlooking ALSM’s Hickory Commons campus. Small pets are welcome. Meal plans are available with dining room and to-go options. Monthly housekeeping is provided. One and two-bedroom apartments are available currently.
- The Lutheran Home continues to focus on individuals who require short-term rehab. Many times, persons who have suffered a stroke or are recovering from a broken limb or limb replacement surgery may benefit from therapy services in a nursing home setting. In addition, long-term care residents are also accepted.
- Short-term respite stays are available. Respite stays allow family caregivers to take a break from caregiving, tend to their own healthcare needs, go on vacation, or attend a family celebration such as a wedding or graduation.
- For more information or to schedule a tour, contact Jeremy Schrader at 814-696-4527.

The Oaks at Pleasant Gap

- The Oaks at Pleasant Gap campus continues to serve the needs of those who desire personal care services as well as independent living apartments and cottages.
- The final cottage cul-de-sac is under construction. Only two single cottage homes remain available to be reserved. For information or to schedule a tour of The Oaks, contact Peggy Brumbaugh at 814.359.2782.
- Short-term respite stays are available in personal care. Respite stays allow family caregivers to take a break from caregiving, tend to their own healthcare, go on vacation or attend a family celebration, for example a wedding or graduation.

Children’s Services

- Growing Years Early Learning Center and Kid Stop managers completed educational courses through the Keystone STARs program for continuous quality improvement. The centers have a rating of 3 STAR or higher out of 4 STARs. Those centers include Bedford and Johnstown Kid Stops and Growing Years in Bedford and Johnstown. PRE-K Counts is offered through Growing Years in Bedford and Johnstown.
- Head Start continued partnerships with the Intermediate Units 08 and 11 to provide inclusive preschool programming to children in Bedford and Fulton counties.
- Head Start continued collaborations with the Chestnut Ridge, Northern Bedford, and Central Fulton school districts for preschool programming.
- The Family Center of Bedford County serves families through home visits, monthly playgroups, fathers’ groups, and special events.

Lutheran Commons at Berlin Pike

- For those seniors who meet income guidelines, there is also a 32-unit apartment building, Lutheran Commons at Berlin Pike. For information on Lutheran Commons, call 814.696.4500 or 800.400.2285.

continued

Lutheran Commons at Pleasant Gap

- For those seniors who meet income guidelines, there is also a 14-unit apartment building, Lutheran Commons at Pleasant Gap. For information on Lutheran Commons, call 814.696.4500 or 800.400.2285.

We invite you to join us at this year's outing, scheduled for Monday, July 22 at Iron Masters Country Club. Last summer ALSM's annual golf outing raised more than \$42,000 for benevolent care. For more information, please contact the Advancement Office at 814-696-4516.

Please know we appreciate your prayerful and financial support and thank you for your partnership in our mission of serving people with love, compassion, and mercy in the name of our Lord, Jesus Christ.

For more details on ALSM programs, I invite you to contact us by phone at 814-696-4500 or visit our website at www.alsm.org.

Together We Can Do Great Things!

Christopher Reighard
President/CEO

ALSM
916 Hickory Street
Hollidaysburg, PA 16648
814.696.4500 • 800.400.2285
www.alsm.org

Candidacy and Leadership Regions 7 and 8



Evangelical
Lutheran Church
in America

Now there are varieties of gifts but the same Spirit, and there are varieties of services but the same Lord, and there are varieties of activities, but it is the same God who activates all of them in everyone. 1 Corinthians 12:4-6, NRSV

Friends in Christ, grace to you and peace as you gather in assembly.

When I talk with folks, I am sometimes asked what I do for my job. When I was a parish pastor, it was relatively easy to describe. Every day in parish ministry is different, but most people, even folks who are not church folks or who actively practice a different faith, have some understanding of worshiping communities and the people who lead those communities. It is not quite as easy to describe this ministry to community members or new candidacy partners. I usually say something like, “I work with people who want to become pastors or deacons. And, I work with the people *who interview the people* who want to be pastors or deacons in our church.”

The follow-up question might be: How do people *actually become* a deacon or pastor in the ELCA?

We trust that the Holy Spirit nudges candidates and guides discernment. A candidate will engage in education, practical experiences, and the candidacy process in their home synod. A synod candidacy committee meets confidentially to engage with candidates to interview, have discernment conversation, accompany, and assess readiness for ordination. The committee works with partners throughout the church—seminaries, synod and churchwide staff, home congregations, and candidates to accomplish this task on behalf of the whole church.

Committees listen to a sense of internal call that the candidate brings; are attentive for signs of an external

sense of call; vote to grant, postpone, or deny candidates at 3 main decision points; and wait to see if after a candidate is approved they will be extended a letter of call and the gift of ordination. You can read more about candidacy and this process at www.elca.org/Resources/Candidacy

Since my last report to you in 2023, Candidacy Committee partners were invited to participate in an online Candidacy Summit, “Called to Accompany and Called to Discern” across the ELCA. In 2024, there will be an opportunity for candidacy leaders from regions 7 & 8 to meet at United Lutheran Seminary for training and collaboration days.

Since 2022, the Candidacy Leadership Development Working Group (CLDWG) has been re-envisioning the entire candidacy process. The CLDWG has started to share possible candidacy changes with candidacy partners and is welcoming feedback. The hope is a new process will be voted on at the Churchwide Assembly in 2025. Please hold all partners in prayer as there becomes more clarity on the future of candidacy. You can learn more at: www.elca.org/Our-Work/Leadership/Candidacy-Leadership-Development

Thank you for your synod’s participation in this shared ministry and for the privilege to serve among you.

In Christ,

The Rev. A. Rebecca Resch (she/her)
Candidacy and Leadership Manager, Regions 7 & 8
becky.resch@elca.org

Region 7: ~ New Jersey Synod ~ New England Synod ~ Metropolitan New York Synod ~ Upstate New York Synod ~ Northeastern Pennsylvania Synod ~ Southeastern Pennsylvania Synod ~ Slovak Zion Synod ~

Region 8: ~ Northwestern Pennsylvania Synod ~ Southwestern Pennsylvania Synod ~ Allegheny Synod ~ Lower Susquehanna Synod ~ Upper Susquehanna Synod ~ Delaware-Maryland Synod ~ Metropolitan Washington, D.C., Synod ~ West Virginia-Western Maryland Synod ~

Lutheran Advocacy Ministry in Pennsylvania

Church Together in Pennsylvania for the Sake of the World God Loves

LAMPa Report to Allegheny Synod

In response to God’s love in Jesus Christ, we advocate for wise and just public policies in Pennsylvania that promote the common good. Lutheran Advocacy Ministry in Pennsylvania is a shared ministry of seven Pennsylvania synods, ELCA Service and Justice, and Pennsylvania ELCA congregations, agencies and institutions. Through LAMPa, Lutherans called to be a part of God’s healing and reconciling mission in the world are supported to voice their faith convictions in the public square with and on behalf of our most vulnerable neighbors and the world we share, while seeking to create a more just Commonwealth.

In 2024, LAMPa celebrates 45 years of advocacy ministry with gratitude for a legacy of community building and justice seeking while looking forward in hope for a more just world. Last year, our work supported and deepened your congregational efforts to address hunger, poverty, health care, civic engagement, housing security, care for creation, criminal justice reform, civil rights and safe communities. Our decades of advocacy on these issues have enabled us to lift up the needs of your ministries and communities to increase anti-hunger funding that supports the purchase of food in many of our community and congregational pantries and incentivizes innovation in the delivery of nutritious food to our state’s seniors. Years of Lutheran engagement on child nutrition helped make permanent universal free school breakfast to give all students a healthy start to their day. In addition, our advocacy helped advance legislation to expand programs to alleviate the housing crisis and prevent homelessness, offer relief from burdensome medical debt, prevent and redress hate crimes, reduce gun-related violence and trauma, and stop discrimination in housing, employment and public accommodations.

In the past year, LAMPa was pleased to welcome the Rev. Erin Jones as our communications and advocacy engagement manager and Quentin Bernhard as our 2023-24 hunger advocacy fellow, which enabled us to launch four statewide service and justice networks to deepen the connection among ministries in every synod. LAMPa continues to education faithful advocates through our new website and e-news and connects them to the public witness of the wider church. We look forward to growing opportunities to support congregations adding advocacy to their day of service on “God’s work. Our hands.” Sunday. I continue to serve in consultation to the ELCA task force developing the social statement on Civic Life and Faith, and urge all to devote time to the newly released draft and to offer feedback.

I give thanks to God for you and for the support of our Allegheny Synod Policy Council representatives, Ms. Susan Barclay and the Rev. Rebecca Horn.

With deep gratitude for all of the ways in which you support LAMPa’s ministry,

Tracey DePasquale
Director

Lutheran Campus Ministry at Penn State /Lutheran Student Community

Lutheran Campus Ministry brings Christ's healing to students in their time on campus and beyond. Students bear a wide variety of burdens and sorrows, even before they arrive on campus. Student life is as complicated and challenging as any other demanding context in our lives. There are family concerns, academic demands, social and friendship challenges, and uncertainty about finances and the future. As they gather with others for worship, discussion, service, or meals together, students encounter true community. They find that they are embraced by God and they are loved. In community, students discern the ways God will work through them in their careers, their activities, and their relationships to be part of bringing healing and hope to the world around them.

Lutheran Campus Ministry is YOUR presence on campus. We are at Penn State on behalf of the synod and the whole church. We walk with students through their years at the university, providing opportunities for them to make connections, grow as people of faith, and serve their neighbor. Lutheran Campus Ministry provides ongoing reminders of God's love and action in the world that touch individual students and the wider campus community as well.

Worshipping Community – Students gather for worship on campus with Lutheran Campus Ministry each week at the interfaith Pasquerilla Spiritual Center. In the midst of their demanding and busy schedules, students set aside time for worship together. Surrounded by peers, they use the ancient words of evening prayer as they sing, pray, share scripture and reflections, and encounter God in the middle of the campus. On Sundays, Deacon Alicia Anderson, Campus Minister, welcomes students at Grace Lutheran Church near campus, helping them feel at home and make connections within the more permanent worshipping community.

Community Connections – Students often grab a quick bite between classes, coursework, and other commitments, eating alone more often than not. Weekly group meals through LCM help them find authentic community within our campus ministry. As students spend time together for Thursday dinner or Sunday lunch, they talk about experiences from the week, sharing

struggles as well as successes. Students also connect with each other and build friendships at volunteer events, through discussions, and in worship. They truly share the journey together, supporting and caring for each other in the highs and lows of university life and the years that follow. Sharing challenges, laughing together, praying for each other, they embody the presence of God with and for one another.

Service and Learning – Students are eager to share their time and abilities to help others. Through service both on campus and off campus, they find the joy of helping while learning more about the complexities of need, generosity, and justice. They also learn about themselves while serving as God's hands in the local community and wider world.

Growing in Faith and Knowledge – Students seek safe places to ask questions about life and faith, as well as places where they can develop new understandings. Through informal conversations, discussion, events, campus-wide speakers, and one-on-one conversations with our campus minister, students explore questions and delve into the myriad of ways faith and daily life intersect. They discern how God is calling them to serve the needs of the world through their life's work, activities and interests, and relationships in their lives.

This past year – Grace Lutheran Church continues to be an important partner in ministry in State College. Students are part of the worshipping community each Sunday and are welcome to participate in the life of the congregation. Students are a vital part of vocal and instrumental music at Grace this year and have been participants in anti-hunger food distributions in partnership with the Central Pennsylvania Food Bank.

Campus Partnerships – Lutheran Campus Ministry and Lutheran Student Community maintain important connections with a variety of groups on campus. Our office in Pasquerilla Spiritual Center provides regular opportunities to work with the Center for Spiritual and Ethical Development in supporting students who are seeking pastoral care, and to partner on events and projects, including Interfaith Literacy Chats. Opportunities to volunteer at the Penn State Arboretum

allow students to serve the community while enjoying the beauty of God's creation. As student life continues to recover from the effects of Covid-19 shut-down and limitations afterward, we are exploring opportunities to resume partnerships with the Gender Equity Center and the Center for Sexual and Gender Diversity within Penn State Student Affairs.

Ecumenical and interfaith partnerships are valuable in our campus setting. We reach out with prayers, compassion, and collegiality to the Hillel Jewish community in these difficult months of violence in Gaza and Israel, knowing there are no easy answers. On Ash Wednesday, Campus Minister Alicia Anderson offered *Ashes to Go* for students between classes on the plaza outside Palmer Art Museum alongside the United Methodist and Presbyterian campus ministers. We continue to look at creating an Interfaith Fellowship that brings students from various faith backgrounds together to explore what it means to be a "person of faith" on campus.

Online Presence – Through weekly listserv messages, Instagram and Facebook posts, and our website, Lutheran Campus Ministry helps inform and engage people online. Students, alumni, parents, and supporters find reflection and prayer resources, see updates on events and opportunities, and can request prayers or one-on-one conversation. This year's *Praying thru Lent* series is our fourth Lenten program offered through social media, in addition to year-round weekly reflections, prayers, and other posts. Through social media, we inform, offer resources for spiritual growth and tell the story of how Lutheran Campus Ministry impacts students.

Fundraising Efforts – As Lutheran Campus Ministry continues adapting to decreased synodical support, congregational gifts and individual donations are vitally important. Using social media for *LCM IMPACT* and *Giving Tuesday* campaigns has helped increase our ministry's visibility and tell the story of Lutheran Campus Ministry. Your financial contributions, volunteer time, leadership skills, student referrals, regular prayers, and other forms of support help us continue to build our faith community and bring the good news of Jesus on campus.

We are grateful – We truly are grateful that the Allegheny Synod sees the vital need for Lutheran Campus Ministry at Penn State and our work on campus. Reaching out to young adults to foster and support their

faith is incredibly important. Providing a community that is centered on the Gospel of Jesus where questions are welcome, diversity is celebrated, and God's love is truly lived, is both life-giving and life-altering.

We invite your continued prayers for campus ministry and for students as they face the unique challenges of university life and growing into adulthood. Please pray especially for those who will graduate this year and those who will arrive on campus for their first year this fall.

Thank you for the important partnership we share in this ministry.

Peace,

Alicia Anderson, Campus Minister
Minister of Word and Service (ELCA Deacon)
Website: lutheranpennstate.org
Social Media on Facebook and Instagram:
[@lutheranpennstate](https://www.facebook.com/lutheranpennstate)

Site:

Weekly listserv for students at Penn State: [Sign Up Here](#)

Messages for Friends of Lutheran Campus Ministry: [Sign Up Here](#)

You Can Help Connect Students with Campus Ministry all across the country

Lutheran Campus Ministry serves more than 250 schools across the country, and we invite your help connecting students to campus ministry. Use this link to connect students with campus ministry on or near their college or university campus.

Visit the LuMin Network to find information about campus ministry at a particular school to share with students: luminelca.org/ministries/.

Lutheran Campus Ministry at Penn State is the ELCA's presence on the Penn State campus, supported through grants from the Upper Susquehanna Synod, Lower Susquehanna Synod, Allegheny Synod, ELCA Churchwide, individuals, and congregations who are committed to fostering spiritual growth of students on campus which lays the groundwork for their lives after graduation.

For we are what he has made us, created in Christ Jesus for good works, which God prepared beforehand so that we may walk in them. —Ephesians 2:10

Fiscal 2022–23 was a year of transition and transformation at Luther Seminary.

Transition: Across our educational programs, we are working to create sustainable new models so that learners can afford not just theological education, but life in Christian leadership.

Transformation: We continue to witness how the Jubilee Scholarship creates a path for students from all walks of life to answer God’s call to ministry. Since implementing this full-tuition scholarship model in 2018, student borrowing has dropped to its lowest level at the seminary in nearly 25 years. A remarkable 67% of our 2023 class graduated with zero student debt.

At the same time, we continue to expand the accessibility of theological education beyond our degree programs through Faith+Lead and digital media like Working Preacher, Enter the Bible, and God Pause. Combined visits to our digital properties and podcast downloads topped 5 million unique visitors in 2022–23, a 20% increase over the previous year.

Transition: With the close of the MDivX pilot program this spring, we are pivoting toward a permanent option for an accelerated M.Div. pathway.

Transformation: MDivX was a resounding success, demonstrating the effectiveness and appeal of a two-year model with simultaneous contextual learning. Retention in the pilot program was extraordinarily high, with 96% of participants graduating. Out of the 51 graduates from the first two cohorts, 47 are actively serving in ministry contexts at the time of this writing, with one in the process of becoming ordained.



The lessons from MDivX helped shape a larger curriculum refresh that reflects our students’ and the church’s needs. The faculty applied insights from MDivX, deep listening to the church, and assessment data in redesigning the curriculum last year for a Fall 2023 implementation. This curricular “refresh” strengthens course sequencing to support learning outcomes, creates natural cohorts through three defined pathways (full-time, part-time, and, in the future, accelerated), and reduces requirements without sacrificing depth or rigor.

Transition: We are in the midst of two budget years designed to support investments in our strategic plan priorities and key financial goals, including increasing Faith+Lead revenue and restructuring the academic programs for efficiency. Modest operating deficits planned for these two years are supported by the seminary’s strong cash position and robust \$120 million endowment valuation as of June 30, 2023.

Transformation: I’m grateful to share with you this snapshot of the “good works” for which God has equipped Luther Seminary. And yet, we know that the true outcomes of the Holy Spirit’s action with and through us ripple out far beyond what can be quantified in any financial report.

Thank you for your prayerful support as we seek to faithfully steward the gifts and mission of this community for the future of Christ’s church.



Peace and blessings,

Robin J. Steinke
President

Luther Seminary

2023 ANNUAL REPORT

AT A GLANCE

- The seminary awarded 439 scholarships in 2022–23.
- Master of Arts students like Ryan made up 62% of enrolled students.
- As scholarship recipients, Ryan and Laura received part of the \$6.15 million awarded during the 2022–23 academic year. On average, students received \$11,033 in scholarships and grants from Luther Seminary.
- Laura was among the 28% of students who pursued a Master of Divinity degree in 2022–23.
- Financial aid covered 100% of the cost of tuition for qualified incoming M.A. and M.Div. students.

BY THE NUMBERS

- 412 students enrolled at Luther Seminary during the 2022–23 academic year.
- ELCA members accounted for 71% of the student body. 34 denominations made up the remaining 29% of students.
- Tuition, student fees, books, and on-campus living expenses cost approximately \$43,911 for full-time students.



MEET RYAN

Having been influenced by philosopher Charles Taylor, **Ryan Popineau '24 M.A.** came to Luther Seminary in order to study with Professor **Andrew Root**, who has written about the implications of Taylor's ideas on ministry. A hospice chaplain and former youth pastor, Ryan is able to apply what he is learning to his work. After graduation, he hopes to write and speak on practical steps pastors and churches can take to minister in the world. "I wanted to attend seminary for nearly 15 years," he said. "The Jubilee Scholarship made attendance an opportunity I could not pass up."

DURING THE 2022–23 FISCAL YEAR

36 international students enrolled from 23 countries.

138 students graduated May 21.

Donor sources made up 96% of Luther Seminary's operating revenue when combining individual donor support, the endowment, and church and synod appropriations.

67% of students graduated without seminary debt. For the others, median debt was \$35,000.



AND LAURA

Laura Otieno '27 M.Div. enrolled in seminary to deepen her understanding of her faith and become a more confident leader, seeking ways to engage individuals and communities with the gospel. Having pursued an undergraduate degree in social work and a master's in nonprofit management while working, she maintains a full-time job in higher education while she studies at Luther Seminary. "The Jubilee Scholarship made seminary accessible to me," she said. "The financial barrier would have kept me from future studying, but now I have the opportunity to develop as a leader."



LUTHER SEMINARY®

Finances 2022–23

Luther Seminary and Foundation consolidated balance sheets
as of June 30, 2023 and June 30, 2022

ASSETS	2023	2022
Current Assets		
Cash and Cash Equivalents	\$12,999,656	\$14,973,591
Other Current Assets	355,911	635,921
Total Current Assets	\$13,355,567	\$15,609,512
Non-Current Assets		
Other Assets	\$2,007,730	\$2,439,809
Investments	123,277,429	122,347,512
Student Notes Receivable, Net	2,038,013	2,156,994
Land, Buildings, and Equipment, Net	8,019,197	8,458,045
Total Other Assets	\$135,342,369	\$135,402,360
Total Assets	\$148,697,936	\$151,011,872

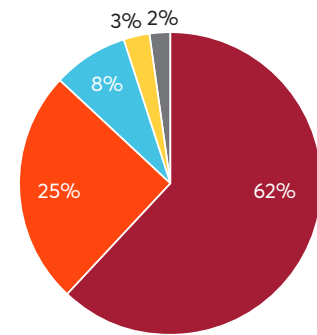
LIABILITIES AND NET ASSETS

Current Liabilities		
Other Current Liabilities	\$4,598,779	\$5,145,611
Notes Payable, Current Portion	153,473	147,465
Total Current Liabilities	\$4,752,252	\$5,293,076
Long-Term Liabilities		
Other Long-Term Liabilities	\$7,604,991	\$8,230,078
Notes Payable, Net of Current Portion	4,231,740	4,385,213
Total Long-Term Liabilities	\$11,836,731	\$12,615,291
Total Liabilities	\$16,588,983	\$17,908,367
Net Assets		
Without Donor Restrictions	\$5,354,872	\$6,937,100
With Donor Restrictions	126,754,081	126,166,405
Total Net Assets	\$132,108,953	\$133,103,505
Total Liabilities and Net Assets	\$148,697,936	\$151,011,872

ENDOWMENT

Total Market Value (as of 6/30/23)	\$120 million
Investment Returns	
1-year	0.8%
3-year	11.4%
5-year	12.1%

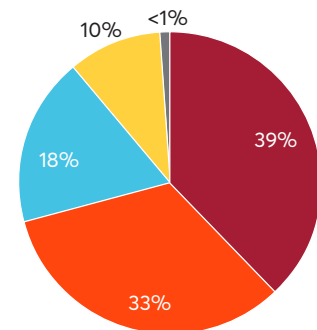
Luther Seminary's annual report numbers are also available at luthersem.edu/giving/annual-report.
Learn more about giving to support future church leaders at luthersem.edu/giving.



Unrestricted Operating Income

Donor Support	\$11,998,446
Endowment Draw	4,897,345
Churchwide and Synod Support	1,504,806
Net Tuition and Fees	437,707
Auxiliary Enterprises and Other Income	415,637

Total Unrestricted Operating Income **\$19,253,941**



Unrestricted Operating Expenses

Student Instruction and Support	\$8,081,592
Institutional Support	6,961,958
Faith+Lead	3,775,597
Physical Plant and Maintenance	2,216,933
Auxiliary Enterprises and Other Expenses	155,814

Total Expenses* **\$21,191,894**

*Includes depreciation



Mission Investment Fund Evangelical Lutheran Church in America

The Mission Investment Fund: Your financial partner

The **Mission Investment Fund**, a financial services ministry of the ELCA, provides a strong, stable, faith-based way for individuals, congregations and ministries to achieve their financial goals. MIF offers a range of investments for individuals, congregations and ministries. We put those investments to work to fund building and renovation loans for congregations and partner ministries, including outdoor camps, senior housing and social service agencies.



The result? Impact investments, with a transformative impact on our communities: Expanded worship spaces ... new space for education and youth ministry ... much-needed day care centers for working families ... industrial-grade kitchens and fellowship halls for community meals.

Why is MIF the right choice?

- **MIF has demonstrated expertise** in church and ministry financing. With longstanding experience in congregation and ministry building projects, we're unique among lending institutions.
- **We consistently offer competitive rates and terms.**
- **We offer a full suite of financial services.** MIF offers congregations, ministries and individuals a host of investment options. We work in deep partnership with the ELCA Federal Credit Union to offer a wide range of financial products and services.
- **The faithful stewardship of Lutheran congregations and their members funds our loans.** The money invested in MIF finances hundreds of capital projects across the church.

MIF has a longstanding tradition of strength and stability. At year-end 2023, MIF had 811 loans outstanding, totaling \$578.3 million. Investment obligations totaled \$547.7 million. With total assets of \$774.4 million and net assets of \$208.2 million at year-end 2023, MIF maintains a capital ratio of 26.88 percent—positioning MIF in the top tier of well-capitalized church extension funds.

Our steadfast support continues for the members, congregations and ministries of the ELCA and the many ways you minister to a world in need. We are honored to walk alongside you as a trusted partner.

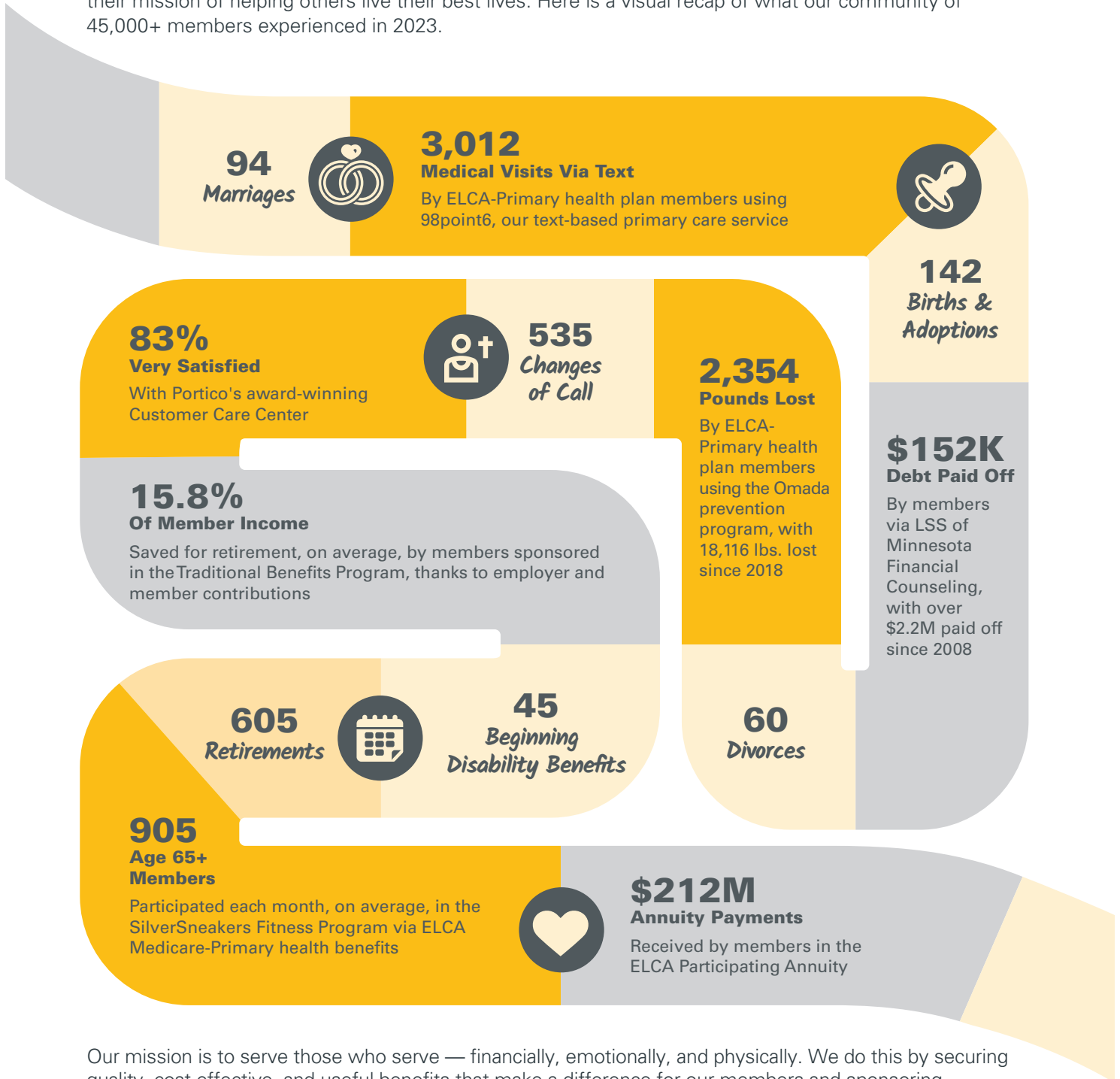
MIF at work in the Allegheny Synod (as of December 31, 2023):

- \$2,405,671 in Mission Investment Fund investment obligations

For more information about MIF capabilities, please visit our website, mif.elca.org or contact your Regional Manager the Rev. Kent Peterson: 276-698-7970 kent.peterson@elca.org

Benefits Making a Difference

At Portico we strive to offer benefits that make our plan members' lives better, so that they can fulfill their mission of helping others live their best lives. Here is a visual recap of what our community of 45,000+ members experienced in 2023.



Our mission is to serve those who serve — financially, emotionally, and physically. We do this by securing quality, cost-effective, and useful benefits that make a difference for our members and sponsoring organizations. With each new year we continue to grow our pool and affirm the value and importance of church together.

Note: Unless a specific benefit program is mentioned, these numbers and percentages were drawn from across Portico's benefit programs.

Sequanota Lutheran Conference Center & Camp

Look at What YOU DID through

Sequanota Conference Center & Camp



YOU
Are Making a Difference

The 2023 camper survey results are in!
Here is a snapshot of the survey responses and the impact of camp!

Campers surveyed agreed:

- 95% felt they were included.
- 82% felt they grew in their faith in God.
- 98% had fun.
- 96% felt safe.
- 93% tried something new.
- 82% practiced their faith habits.
- 79% didn't give up when challenged.
- 97% had a great week.

How has your time at camp changed you?

- "I grew in my faith and independence. I also made new friends."
- "I'm more confident and I can sing better."
- "I will challenge myself more."
- "I think it really opened my eyes to God more."
- "It made me feel empowered and to spend more time with God."
- "I'm not as shy."
- "I like nature more."

Summer Camp

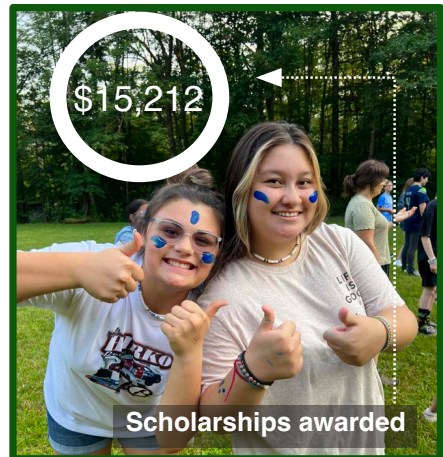
YOU Are Making a Difference

Camp is an odd magic trick. When campers overcome a fear (climbing to heights) or solve a problem (resolving a conflict with cabin-mates) or experience a triumph (learning to shoot a bow and arrow), they often think that they are doing so all on their own. No parents are there, so the triumph belongs to them. Here is the trick - while they think they are "all on their own," they are surrounded by caring cabin guides who form a supportive community that will spring to action if they truly struggle in a way that becomes destructive or damaging. Campers get the boost of confidence that comes from independent success without the risk of complete and unsupported independence.

Camp is an odd magic trick. When campers overcome a fear (climbing to heights) or solve a problem (resolving a conflict with cabin-mates) or experience a triumph (learning to shoot a bow and arrow), they often think that they are doing so all on their own. No parents are there, so the triumph belongs to them. Here is the trick - while they think they are "all on their own," they are surrounded by caring cabin guides who form a supportive community that will spring to action if they truly struggle in a way that becomes destructive or damaging. Campers get the boost of confidence that comes from independent success without the risk of complete and unsupported independence.

<i>Campers</i>	2023	2022	2021	2019
On Site	341	341	301	308
Off site Day Camp	65	57	0	224
Hosted Youth Camps	327	298	133	238
Summer Totals	733	696	434	770

How YOU DID IT





26

Young adult summer staff members hired



28

Worship services led by summer staff



16

Lifeguards trained

Sequanota hires a team of young adults to help accomplish the magic trick of camp. This team of staff create an invisible scaffolding, which provides care, support and guidance to campers. It is what makes the camp experience a unique and vital part of a child's development. Camp's staff aid campers in growing in confidence, independence and persistence. Thank you for your contributions that support a great staff!



Individuals volunteered

124

How YOU DID IT

Volunteer Hours
 Summer Camp
 Year Round

2023
1216
929

Valuation of volunteer hours

\$63,878



Conference & Retreat

New Year's Day Hike



2023 Programmed Ministries

New Year's Day Hike

Snow Camp

IGNITE Youth Retreat

Sustain: Adult Retreat

Belong: Young Adult Retreat

Love Your Mother (Earth) Retreat

Spring Work Day/Fall Trail Clean up

5 School Field Trips

Well Festival

Adult Day Study



Belong: Young Adult Retreat



<i>Conference & Retreat</i>	# of groups
Hosted Ministry	47
Program Ministry	14



YOU Are Making a Difference Facility Improvements

Sequanota's facilities team, volunteers, and synod congregations (Grace, State College and St. David's, Davidsville) continue to make renovations to the campus. Bathroom upgrades have been central this year. We have remodeled

cabins 2 & 11, the staff cabin, and the old dining hall bathrooms to have individual stalls with locking doors for added privacy. Cabin floors and walls were painted. The craft cabin and cabin 1 were scraped and are ready for a new coat of paint. Twenty volunteers help to rejuvenate four trails and bridges on trail clean-up day in September. St. David's spent "God's work our hands" day clearing brush and trees, fall cleaning the Bowersox Retreat Center, and preparing a mailing. We couldn't do it without you!



This year we tried something new! A festival style weekend filled with learning opportunities sturctured to encourage conversations between sessions leaders and attendees. Both adults and kids enjoyed the weekend and we are excited to do it again in 2024! Join us June 20-23 for the Tend Festival at Sequanota!



Session choices



Baskets woven

Read what folks said about the Well Festival

"Kaila is a gifted teacher who uses her talents very effectively to share her faith. She is caring, dedicated, generous, patient, and fun. She clearly loves what she does. She went over and beyond her commitment to the camp to help everyone who wanted to create a basket achieved success. She also seemed to enjoy socializing with campers when she wasn't teaching. Her message at worship was a wonderful memorable way to share the Good News."

"The Well Festival was an incredible experience."

"Hiking barefoot was nothing I ever considered doing and I loved the experience."

"It made me physically feel good!"



Garden teas made by kids



92

How YOU DID IT Kindle Monthly Giving Club



BECOME A KINDLE CLUB MEMBER

KINDLE Monthly Giving Club partners ignite our ministry to serve in new ways. When you give though monthly gifts, you provide regular and consistent income to help Sequanota kindle the faith of our campers and guests.



346 monthly gifts ranged from \$5 - \$250



Scan the QR code and become a Kindle Club member today!

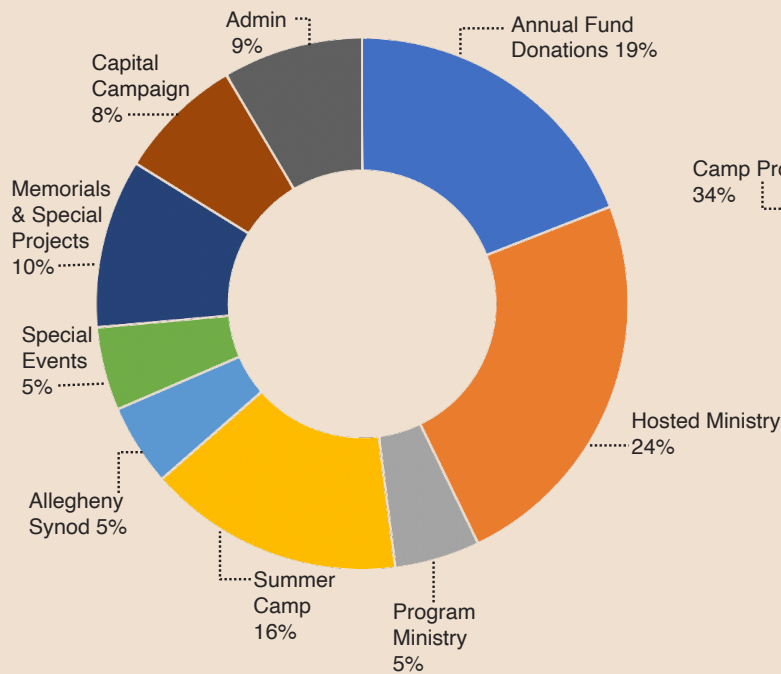
How YOU DID IT

Special Events

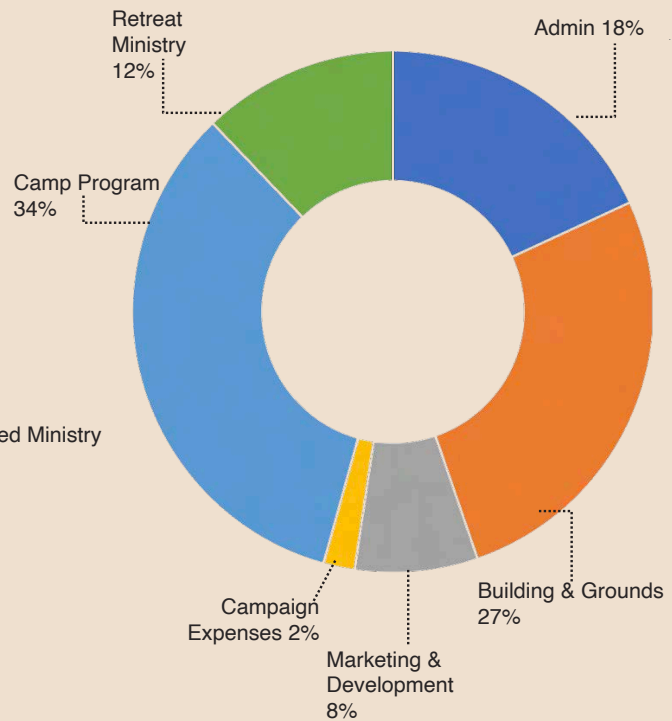
Special Events	Participants	\$ Raised
Happy Camper Fun Run	20	\$7,815
Spring Benefit Dinner	92	\$12,940
Mother's Day Buffet	302	\$4,974
Golf Benefit	40	\$3,644
Breakfast with Santa	156	\$923
TOTAL	610	\$30,296



Total Revenue - \$658,700



Total Expenses - \$635,487



Assets

Cash and cash equivalents	\$	363,456
Pledges & Receivables		4,680
Other assets		17,111
Property and equipment, net		895,399
Total	\$	1,280,646

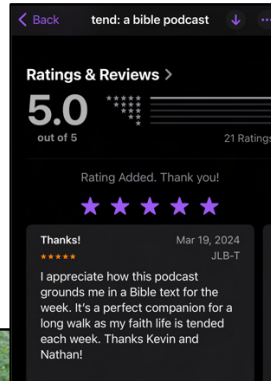
Liabilities

Notes payable	\$	230,820
Deferred revenue		5,816
Other Liabilities		25,813
Equity		1,018,197
Total Liabilities & Equity	\$	1,280,646

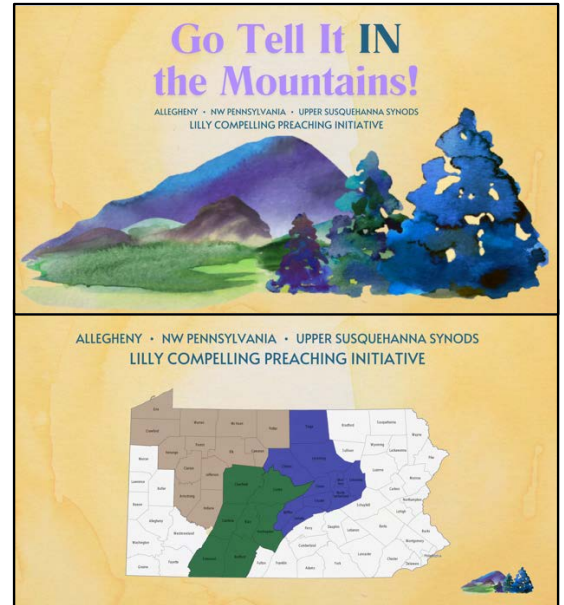
Note: The 2023 audited financials will be available after September 2024.

Partners with SEQUANOTA

During the spring of 2023, Pastor Nathan convened a group to write a grant from the Lilly Foundation. The grant was fully funded at \$1.25 million dollars and will support preaching resources to be developed and used throughout our region. Contact the Allegheny Synod to see how your congregation can be involved!



Pastor Nathan and Pastor Kevin Shock recorded 54 episodes of "tend, a bible podcast." There were 3,122 downloads and 21 5-star reviews! Episodes average 45 minutes and focus on a scripture passage from the weekly lectionary. You can find it on Apple Podcasts and Spotify.



The Sequanota team worked with colleagues from the Allegheny Synod to create both a devotional resource and a weekend event for synod youth in December.

Thrivent Choice Dollar Donations for 2023 = \$8,514

Allen and Carol Chrise

Ann Brooks

Anna Weaver

Anne & Ronald Barnes

Ben and Marie Waltermire

Cleone Rudisill

Dave and Theresa

Shoemaker

Ed and Sue Vorhauer

George and Ardelle Mason

Jeffrey and Angela Fink

John and Becky Minnich

Lois Tomb

Nathan and Angie Pile

Nelson and Sandy Ilgenfritz

Dick and Sharon Peterson

Robert Thomas

Ruth Marshall

Sam and Chris Hemminger

Samuel and Fern Clapper

Celine Horner

Jay and Sara Hay

Barbara Swanson

Elizabeth Thomas

Timothy Braun

Jane and James Davis

Sally Fink

Patty and Phil Gross

Wade Horner

Esther Mishler

Noel Strattan

William and Darlene Weible

Pamela Baker

Nora Gelnett

Allen Boyer

Gregory Geist

Susan Brandau

Robert and Susan Will

George Detwiler

Lionel Hoover

Marian Lynn

Dennis and Katherine Naugle

Daniel Weimer

Robin Walukas

Mr. & Mrs. Eugene Spangler

Dave and Cindy Liska

John and Gayle Liska

Betty Weigle

Linda Spoerlein

Marvin and Jeanie Shaffer

Jean Ayers

Wayne Kaufman

David and Karen Truesdale

Bill and Paula Nihoff

Roxann and Lewis Berkey

Gregory and Susan Ferro

Nancy Shingledecker

Jean Vonada

Mark Swank

Founders' Fires Giving Tiers

2023 gifts to the Annual Fund. Benefits, memorials, and scholarship funds

+ Denotes Kindle Club Members

Founders:

\$1000+

Benscreek Lutheran, Hollsopple
 Christ Lutheran, Claysburg
 Grace Lutheran, Stoystown
 Simpson Temple United Parish
 St. John's Lutheran, Salisbury
 St. Luke's Lutheran, Rockwood
 St. Matthew, Martinsburg
 St. Paul's Lutheran, Johnstown
 Trinity Lutheran, Somerset
 Zion Lutheran, Johnstown
 Allegheny Synod
 Stoystown Tank and Steel Co.
 Anonymous Donor
 Pamela Baker
 Kirby & Susan Barclay +
 Susan Baughman +
 Vicki Beilfuss
 Kevin and Melody Berg
 Elda Burket
 Dennis and Evelyn Calhoun
 Samuel and Fern Clapper
 Deborah and Edward Fegan
 Gary and Jackie Gable
 Tom and Kathryn Goetz
 Sandy and Denny Hall
 Edward Harshbarger
 Charlie and Gail Korn
 Kathy Landis +
 Dave and Cindy Liska
 Scott and Wendy Markell
 Bill and Holly Marriott +
 Dennis and Elaine Merringer
 David Myers
 John and Gail Palko
 Marsha Parkins
 Nathan and Angie Pile +
 Greg and Barb Pile
 Collene Reeves
 Michael and Marcia Satryan
 Susan Sedory
 Marvin and Jeanie Shaffer
 Eva Strang
 Robert Thomas
 Barbara Wachter
 The Law Office of Megan E. Will
 Joy Zimmerman

Luther League:

\$500 - \$999

St. Johns Lutheran, Millheim
 Moxham Lutheran, Johnstown
 Mt. Calvary Lutheran, Somerset
 Pine Hall Lutheran, State College
 Grace Lutheran, State College
 Grace Lutheran, Johnstown
 M.J. Miller Family Agricultural Heritage Fund
 Allegheny Synodical Womens Organization
 Eleanor and Bob Abarno +
 Dan and Sharon Berkebile
 Roxann and Lewis Berkey +
 Tony and Susan Buda
 Brian Coltin
 Janis and Bill Coltin
 Jane and Jim Fagans
 CBM Business Machines
 Debra Garland +
 Jennifer Hollinger
 Nelson and Sandy Ilgenfritz
 Donald F. Koontz
 Bonnie Leibfreid
 Matt Lloyd
 Traci Marriott +
 George and Ardelle Mason +
 John and Pam Maurer
 1st Summit Bank
 Stan and Deb McQuaide
 Rev. Carl and Nancy Miller
 Alan and Lana Miller
 Melanie Miller
 Jeff Nider
 Larry and Allison Olson
 Andrea Paul
 Mark and Marian Peterson
 Lisa Bahr and Kevin Shock +
 Elaine Smith
 Barbera Law
 Caryl Swanson
 Jill Taylor
 Priscilla Walter
 Dana and Dennis Weimer
 Stacy and Paul Wheeler
 Richard and Rebecca Whipkey
 Cindy Winger
 Larry Mazer and Susan Winger +

Council Fire:

\$250 - \$499

Faith United Lutheran, Houtzdale
 Christ Lutheran, Buffalo Mills
 Laurel Trinity Lutheran,
 Jennerstown
 Zion Hoffman Lutheran, Acosta
 St. John Lutheran, Centre Hall
 St. John Lutheran, Williamsburg
 North Star Youth Outreach
 ZelleM Masonry Construction
 David Andrews
 Kim Ankeny
 Charlotte Aungst
 Rod and Julia Benton
 Gillian Benton +
 Richard Braun
 Lisa and Ben Buchanan
 Joan Bunnell
 Kathryn and Stanley Corl
 Elizabeth DeProspero +
 Edward and Pernelle DeVore
 Dan and Geeg Eash +
 Ann and Randy Ferry +
 Suzanne and Mark Glenn
 Linda Himes
 Regan and Bob Jones
 Bob and tyna Kaltenbaugh
 Tim and Leslie Lady
 Bishop Paula Lebo
 Drew and Amanda McCaffery +
 Randi Newlin
 Will and Elisa Osman
 Andrea Paul
 Erin and Shane Peterson +
 Aaron and Nicole Pile
 Luke and Kimberly Pile
 Pile Psychological & Counseling
 Services
 Kim Rauch
 Lou Ann Reckner
 Kellie Schwake +
 Dave and Theresa Shoemaker
 Doug and Linda Shrader
 Paula Townsend +
 Phil and Lori Trayer
 Ed and Sue Vorhauer
 Dr. Florence Warfel
 Gary and Amy Weimer
 Hanna Weimer +
 Claire and Stephen Zufall



Nature Lodge:
\$175 - \$249

Mt. Calvary Lutheran, Johnstown
 Mt. Zion Lutheran, Glasgow
 Faith Lutheran, Somerset
 First Lutheran Altoona
 First Lutheran, Johnstown
 Carroll Law Offices
 Richard and Anna Adams
 Joanne and Barry Ash
 Peter and Peggy Barta
 James Bassette +
 Elise Bates Russell
 Scott and Lisa Bittner
 Mike and Barbara Bittner
 Ronald Blatchley
 John and Marianne Brock
 John Centi
 UNH Department of Kinesiology
 Louise and Gerald Dumbauld
 Margaret Dunkelberger +
 Heide Eash
 James Fogle
 Sandy Griffith
 Dan and Barb Halverson
 Bruce and Wilma Horner
 Elizabeth Horner
 Horace and Connie Hubbard
 Mr. & Mrs. Randy Jeffries
 Robert Keene
 Gene and Linda Kneller
 Raeanne and Sean Knull
 Garr and Connie Lystad
 Rick and Diane Miller
 Gloria Reed +
 Lois Ryan
 Ronald and Lois Tessari +
 Joel and Kristine Weaver
 Nancy and John Webb
 Daniel Weimer +
 Greg and Amy Will
 Hattie Williams
 Raymond and Nancy Wojnarowski

Outpost:
\$100 - \$174

First Lutheran, Portage
 Friedens Lutheran Church
 Beer, Ream & Co
 Olanta Lutheran Church
 Jonathan & Rebekah Adams
 Bob and Bev Anderson
 Pink and Sherri Andrews
 Alison Baker
 Jeff and Heather Baltzer
 Rick and Tina Barron
 Bob and Beth Belsterling
 Joel and LuAnne Bergstrom +
 Todd and Gail Berkebile
 Aaron and Becky Berkey +
 Shirley Bezilla
 Bryan and Trisha Bozovich
 Susan Brett
 Jo Ann Brewer
 Norma Brubaker
 Helen Burstin
 Robert and Patricia Byers
 Joyce L Casebeer
 Allen and Carol Chrise
 Don & Deana Coine
 Janet Hanson and Gary Conklin
 John Conklin & Maria Esposito
 Scott and Carol Custead
 Deaner Funeral Homes
 Pam and Donald Drenner
 Cathy and Clayton Ford +
 Elizabeth Foust
 Thelma Fritz
 Elizabeth Gaffron
 Audrey Grening
 William and Nancy Grove
 Barbara Gulick
 Jeff Herman
 Larry & Linda Hoover
 Celine Horner
 Terry Hunter
 Gretel Kaltenbaugh
 Christopher Kang
 Rick and Kristine Klotz
 Monica and Tim Knauss
 Tom and Heidi Koppenhofer
 Marlene Kough +
 William Lloyd
 Janet and Eric Lynam
 Steve and Lois Lynn
 Lisa and John Mancinelli

Bonita Marek
 William Martz
 Holly Mason
 Bob McMullen
 Dorothy and Lee McQuaide
 Benjamin McWhorter-Rush +
 Luther P. Miller, Inc.
 Lois Miller
 John and Becky Minnich
 Esther Mishler
 Tom and Jill Mitchell +
 Laurel Hill Provisions, Inc.
 Phyllis and Joseph Murray
 Mike and Gail Nedimyer
 Jana Nelson
 George and Shirley Page
 Blake and Katherine Peese
 Ann Persun
 Dick and Sharon Peterson +
 John and Beth Pile
 Marlin and Jean Plymette
 Poggi Family Practice
 Slovenian Savings & Loan
 Janet and Royce Raines
 Kathy and Bob Reed
 Michelle and Mike Reefer
 LaVerne Reffner
 James and Linda Renney
 Shawn Restly
 George and Joanna Rudisill
 Schmidt Supply
 Wendy and Anthony Serapiglia +
 Nancy Shaffer
 Construction Equipment Service
 Judy Simonson
 Pat Sleek
 Sheila Specht
 Linda Spoerlein
 Randy Sterner
 Charles Strine
 Lindsie and Dan Struth
 Pamela Swansboro
 Cathy Tompkins
 Blake and Karen Wagner
 Ralph Wainwright
 Erica Walker
 Ben and Marie Waltermire
 Ed Warshel
 Anna Weaver
 Zachary Weimer & David Schwartz +
 Stephen Weimer
 Peggy Yommer

Contributions up to \$99

St. David's Lutheran, Davidsville
Shepherd of the Hills, Karthaus
Ralph and Kathleen Alberti
Ernie Altimore
Betty Jean Anderson
Nora Andrews
Jane and Frank Antonson
Andrea Arey
John Barichivich
Doug and Kathleen Bell
Scott and Susan Berkebile
Amy Berry
Matthew and Shanna Bittner
Michael Bittner
Mike Blair and Lynn Miller
Carolyn Blatchley
Steve Boucher
Ed and Syd Bowersox
Jocelyn and Scott Brant
Evan Brock
Ann Brooks
Dave and Judy Brotz
Eric Brubaker
Trevor Buckham
Catherine Caffey
John Carl
Chris and Jennifer Carr
Logan Carroll
Elizabeth Caton
Rich and Shirley Clay
Casey Colledge
Terry and Joyce Conrad
Wes Cook
Andrea Crawford
Pamela and Floyd Croyle
Eugene Dziurzynski
David Dziurzynski
Kim and John Fagan
Alyssa Foldes
Linda and Kevin Foster
David and Dorene Friedline
Nancy Gay
Martie Gilbert
Diana Gough
Edmond and Joyce Gresick
Denise and George Grove
C. Gregory Haffling
Bob & Mary Jo Hall
Brittany Hankins
Dora Harpster
Tom and Deb Harris

Mary Joyce Harrold
Amy and Bob Hay
Carole and Charles Heilig
Annah Hill
Sylvia Hirsch
William Hite
Jack and Kay Howsare
Guy and Sue Imhoff
Jon and Aimee Jacobs
Yvonne Janidlo
Charles Johnson & Lois Johnson
Ethel Mae Karfelt
Susan Kerch
Jill Kirsch
Eric and Tamara Knopsnyder
Robert Koontz
Emily Koppenhofer
Jolene and Thomas Kopriva
Kerry and Judy Kreger
Connie Lamborn
Matthew Lavine +
Peggy Lichtenfels
Breanna Lowery
Ellen Lundie
Avril Luongo
Tiffany and Joe Marvich
Lynn McCormick
Janice and Jeff Meadows
Angie Meyers
Al Miller
Aileen and C. W. Miller
Art and Carol Moffat
Suzanne and Nicholas Morelli
Mosholder Insurance Agency
Beverly Mostoller
Marina Mukai
Mark Myers
Marie Neff
Ron and Amy Notovich
Earlene O'Brien
Kim O'Donnell
Charlie Ofsanko
Joshua Oglie
Janet Opalinski
Maureen Pavlik
Sarah Peach
Barbara Jean and Wallace Penrod
Kevin Peterson
Sarah and Buster Pile
Eleanor Pritts
Terry Pugh

Jane and Dave Pugh
Shannon Reed +
Patti Reifer
Beverley Ann Rose
Erika Winters Rowe
Cleone Rudisill
Karen Rupp
Mark and Deborah Rychak
Gail Salada
Buddy Sargent
Kathy Sedory
Tina and Jeff Shaffer
Ed and Patti Shaffer
Jessica and Levi Shaffer
Cherie Shannon
Nikki Simpson
Linda Smith
James Smith
Nick and Kathy Snitzer
Gary Soha
Michael and Lois Springer
Margaret Steinfurth
Barb Timm
Elizabeth Turner
Heather Vorhauer
Ellen Vorhauer
Jim and Rosella Wagner
Lindsay and Spencer Walker
Joseph Walter
John and Cheryl Watt
Valerie and Wayne Weaver
Sherman and Barbara Weible
Pam Weimer
Susan Willamson
Bob and Sally Williams
Fred Wilson
Kristy Witmer
Becky Zlotkowski
Violet and Edward Zorn

2023 gifts in memory of

Jack Timm

Leverne Sedory

Linda McElroy Thomas

Ed Harshberger

Charlie Lady

T. Zoe Smith

Merle Mishler



Faith-informed Learning & Community

June 20-23, 2024

We are excited to invite you to Sequanota's Tend Festival, an event that celebrates creation, wellness, social justice, and community. This unique festival offers a range of activities and events that promote physical, mental, and spiritual well-being, as well as an opportunity to enjoy the beautiful surroundings of Sequanota.

The Tend Festival will take place on June 20-23 at Sequanota, and we would love to have you join us. We strive to live authentically as God's people. Over the generations, people have found that it is easier to live and strive when we do it together. This is what the Tend Festival is all about - living, learning, and loving together.

A key component of the event is to simply provide open space for participants to engage one another. The idea is for spiritual explorers to gather to find community and support as we engage in a wide range of conversations.

The festival is designed to offer different learning experiences to provide opportunities for conversation. Maybe the conversation is new to you, or maybe you are a seasoned veteran on a topic, but this weekend is curated to provide the space to discuss and explore together.

For more information and to register, visit our website: www.sequanota.com/tendfest

Sample Learning Areas

Environment

- Naturalist hike & technology
- Feeding ourselves and our neighbors
- Hunting and ethics
- Climate change and faith

Economics, Justice & Advocacy

- Gender & Inclusion
- Recovery Advocacy

Food & Health

- Mental Health
- Kids and Gardens

Practical Theology

- Welcome in the congregation
- Finding your way in faith as a young adult
- Social media and evangelism
- Faith & Politics

Devotional/Spiritual Life

- Yoga
- Walking a Prayer Labyrinth
- Meditative Prayer

Arts & Media

- Cross making
- Painting and crafts

Music

- Faith and sound workshop
- Hymn sing along
- Exploring the new All Creation Sings hymn book
- Live music

Open Space

This is a designated area that will always be open to continue a conversation. Participants can share a topic they would like to talk about or continue a topic from earlier in the event. The space is designed to make an open space for continued conversation.

Thank
YOU!

Thank
YOU!

Thank
YOU!



We always give thanks to God for all of you and mention you in our prayers, constantly remembering before our God and Father your work of faith and labor of love and steadfastness of hope in our Lord Jesus Christ.

— 1 Thessalonians 1:2-3

Looking forward in 2024

- | | |
|------------|-------------------------|
| May 12 | Mother's Day Banquet |
| June - Aug | SUMMER CAMP |
| June 20-23 | TEND FESTIVAL |
| Aug 19 | Golf Benefit |
| Aug 21-28 | Adirondack Canoe Trip |
| Sept 14 | Trail Clean Up Weekend |
| Sept 28-29 | IGNITE/PLUNGE - Retreat |
| Oct 10 | Adult Day Bible Study |
| Dec 7 | Breakfast with Santa |



SEQUANOTA
Lutheran Conference Center & Camp
PO Box 245
Jennerstown, PA 15547

Contact us:
web: www.sequanota.com
Phone: (814) 629-6627
email: contact@sequanota.com

Report of Susquehanna University

Life of the University

The 2023-2024 academic year marks the 166th for Susquehanna University. The University continues to serve a religiously diverse student body, about 7% of whom self-identify as Lutheran and who hail from 35 states and 22 countries. Dr. Jonathan Green, Susquehanna's 15th president, is completing his seventh year of service.

Campus Religious Activities

Life continues to help members of the academic community integrate faith, life, and learning. Many religious life organizations and various ministries and programs offered by the Office of Religious and Spiritual Life help students grow spiritually as they grow intellectually.

Sunday worship services are held in Weber Chapel when classes are in session, welcoming students, faculty and staff as well as people from the surrounding community. The student leadership intern program allows select students to explore Christian service through formal servant-leadership roles.

Interfaith engagement is a strong commitment of ELCA institutions of higher education generally, and Susquehanna in particular. Eight different religious student clubs and organizations attest to the vibrancy of religious life on campus. As part of campus commemorations of Martin Luther King, Jr.'s legacy, a campus interfaith

celebration remembered King's work as an interfaith leader and featured student speakers from a diversity of religious traditions.

Ours is a religiously diverse campus, a reality which we embrace not in spite of but because of our Lutheran tradition, which teaches that the other is to be welcomed as Christ and that education serves the common good. In our world where religious conflicts are routinely in the headlines, the work of building bridges of understanding and cooperation across lines of religious and philosophical difference is an essential civic and spiritual task. Such work has been an important part of religious life at Susquehanna in the past year.

In October, Rev. Lamont Wells, president of the Network of ELCA Colleges and Universities, delivered the Schmidt Lecture in Ethics, "Faith in the Academy: Exploring and Reframing the Role of Religion in Higher Education." This provided a rich discussion on the mission of Lutheran higher education at Susquehanna and beyond.

In Conclusion

Susquehanna University deeply appreciates the ongoing support and encouragement that the Evangelical Lutheran Church in America and the Lower Susquehanna Synod give to its efforts to be a strong and successful college of the Church.

The Rev. Dr. Scott M. Kershner, Chaplain to the University

United Lutheran Seminary

Unifying, Learning, Serving

Dear Partners in Ministry,

Grace and Peace be with you in your synod assembly. I pray that your work bears fruit that will give praise to God and service to neighbor in the broad context of ministries that you share.

United Lutheran Seminary continues to walk with you in this journey, asking for your prayers and support as we focus on four areas of accompaniment:

1. Providing a relevant education for students studying to be deacons and pastors through our recently revamped curriculum, which increases emphasis on the practice of ministry.
2. Seeking ways to decrease the costs of a seminary education so that our graduates will not be burdened with debt loads, and at the same time trying to bring as many students as possible into our classrooms.
3. Increasing the quantity and quality of continuing education options through initiatives like the Kindling Faith program so as to offer a lifelong community of learning for rostered and lay people. We also hope to be out among you in the synods more often than we have been since the pandemic.
4. Seeking your support to strengthen and sustain our relationship with your synod and the whole ELCA that responds to the needs of the church now and in the future.

I am happy to share that our enrollment numbers continue to be strong with just over 350 students across our degree programs: 116 studying to become deacons or pastors, 89 in the Doctor of Ministry program,



and the remainder in other master's level or certificate programs. This fall we will be enrolling a new cohort of PhD students for the first time since before the consolidation of our predecessor schools. In addition, the Asian Theological Institute, Kindling Faith, and the Urban Theological

Institute have received \$3 million in grants, collectively, to benefit their continued work.

We also welcome Rev. Dr. Nelson Rivera and Dr. Andre Price to our faculty and the new CFO, Brandee Carrigan, to senior administration. We are grateful for those of you who serve on our Board of Trustees for the wisdom you bring to the table. Our Seminary Ridge Museum excels at sharing the complex narrative of the pivotal moment in the Civil War that continues to inform our theological discussion in these times of polarization and strife. Our Kindling Faith program is always expanding its programming and providing opportunities that are culturally relevant and spiritually fulfilling both online and in-person, and on both our physical campuses (type "Kindling Faith" in the search bar to learn more).

This being my fourth year as President of ULS, I can report with gratitude that the prospects for the seminary are very good as we approach the 200th anniversary of our founding. We hope you'll be able to celebrate with us at one of the many 2026 events we are planning to mark the occasion. Lastly, I wish you the peace that passes all understanding in the journey ahead—a journey we make together.

Rev. Dr. R. Guy Erwin



Wartburg College is dedicated to challenging and nurturing students for lives of leadership and service as a spirited expression of their faith and learning.

Guided by our vision, we are answering the call to prepare resilient leaders of positive change for service in a complex world. This will be realized by building on our distinctives and embracing new opportunities to be the leading institution in educating the whole person.

Enrollment

- Fall 2023 enrollment was 1,472 students from 41 U.S. states and 44 countries, which includes 196 U.S. students of color and 92 international students. More than 20 Christian denominations and several world religions are represented. Our enrollment saw its largest year-to-year percentage increase since 2016.
- The five majors with the highest enrollment are business administration, biology, exercise science, elementary education, and psychology.
- The online Master of Arts in Leadership program enrolled a new cohort of eight students as well as one pursuing the Graduate Leadership Certificate.

Strategic Positioning

- After almost two years of research and planning, the college announced the Wartburg Commitment, a new pricing model and value proposition designed to help students consider, afford, and experience Wartburg College. Starting in Fall 2024, the comprehensive program includes a new competitive price, reduced financial barriers for lower- and middle-income families, and funding to increase access to immersive experiences.
- A new Wartburg brand, Experience More, was launched in conjunction with the Wartburg Commitment. Extensive research found the distinctive experiences students have at Wartburg involve a nurturing community, connection, and engagement. These common threads of the Wartburg experience resonate with students, faculty, staff, and alumni.

Academic and Co-Curricular Programs

- The first 15 students to earn a master's degree from Wartburg College graduated in May with a Master of Arts in Leadership. The students came from as far away as Ohio and California and represented an array of work sectors, including business, K-12 and higher education, public administration, the military, and faith communities.
- In January 2023, Wartburg faculty approved a new THRIVE General Education curriculum to be implemented in the 2024-25 academic year. THRIVE stands for Thinking Critically, Human Culture, Reasoning, Information Fluency, Vocation, and Effective Communication.
- Dr. Ethan Blass was inducted into the newly established Herbert and Mildred Kleinfeld Professorship in German Language and Culture. The professorship, provided through the generosity of Gerald Kleinfeld in honor of his parents, will support teaching and learning in the German Department.
- As a member of the Iowa Private Transfer Collaborative, Wartburg received a three-year grant from the Arthur Vining Davis Foundations and Teagle Foundation to make the experience of transferring from an Iowa community college more transparent.
- The college launched Knights to Know, an educational web series that introduces influential alumni to the greater Wartburg community. The first year's theme is Women of Wartburg and has featured women in STEM and leaders in service.
- In 2023, the Wartburg esports team began competing in a new state-of-the-art arena that was created through the renovation of a computer lab and classroom.
- Women's wrestling opened its inaugural season in Fall 2023, bringing the total number of intercollegiate athletics teams to 25.

Spiritual Life and Campus Ministry

- The Rev. Maggie Falenshek was named the dean of spiritual life and the Herbert and Cora Moehlmann

continued

Chaplaincy Chair effective Aug. 7, 2023. She is a graduate of Concordia College and Pacific Lutheran Theological Seminary with a demonstrated passion for Lutheran higher education and a desire to interpret Wartburg's Lutheran values for an increasingly diverse campus community.

- Spiritual Life equips all students to live into a spirited expression of their faith. As our campus becomes increasingly religiously diverse, we seek innovative ways to holistically support our students as well as build bridges across difference. This work includes partnering across campus with Student Life, Academic Affairs, and Dining Services.
- SLCM has welcomed Kristin Teig Torres in a reimagined position as Director of Student Leadership, Service, and Engagement. Kristin's presence in and in collaboration with SLCM intends to amplify the connection between spirituality and service on our campus.
- Within their roles as Moehlmann Chaplaincy Chair and McCoy Family Distinguished Chair in Lutheran Heritage and Mission, Maggie Falenschek and Caryn Riswold are working to develop a common language set focused on what it means to be a Lutheran college to assist with interviewing and onboarding of new employees and as foundational understanding for our campus community.
- Craig Hella Johnson, a critically acclaimed composer, arranger, educator, and conductor, received the 2023 Graven Award in its 34th year. The annual award for Christian vocation highlights the powerful and positive effect of a strong sense of Christian vocation as it interfaces with service to the community, the church, and the world.

Recognition

- President Rebecca Ehretsman was the recipient of the 2023 American Association for Hand Surgery Humanitarian Award, which honors special contributions or personal sacrifices for the betterment of humanitarian efforts. Ehretsman has contributed to global medical outreach around the world, including 19 visits to Guatemala and treatment for hundreds of children with congenital limb differences and traumatic injuries.
- Michael McCoy, chair of the Wartburg Board of Regents, received the Council for Advancement and Support of Education (CASE) Volunteer of the

Year Award for his work with the college, which has spanned three decades and includes more than \$7 million in gifts for capital projects, an endowed chair, and numerous other enhancements.

- The Wartburg Medal was presented to Bill Hamm '66, former interim president of the college and Lutheran higher education leader; the Rev. Durwood "Bud" Buchheim '53, a longtime Lutheran pastor; Hans-Peter Brodhun and the late Günter Schuchardt, retired members of the Board of Regents from Eisenach, Germany; and Tom '68 and Marnie '69 Hubbard, former Wartburg employees. The Wartburg Medal recognizes individuals who have provided significant service to the college over a sustained period and who have a personal commitment to the college's mission, quality, and character.
- Jen Christy Bye '95, a strategic portfolio and program manager for Principal Financial Group, was elected to the Board of Regents.
- Paul Zelle '24 received the Rossing Scholarship in Physics from the ELCA for the second time. Zelle is pursuing a degree in computer science and physics.
- Rebecca Ndhlovu '24, a Davis United World Scholar from Zambia, received a \$10,000 Projects for Peace grant to carry out a summer humanitarian effort teaching young girls in Lusaka, Zambia, how to make and sanitize reusable menstrual pads.
- Maeve Dunne '23 was selected by the J. William Fulbright Foreign Scholarship Board for a Fulbright award to Taiwan through the program's English Teaching Assistant Program.
- Andrew Buchheim '23 received the prestigious R.J. McElroy Graduate Fellowship, designed to encourage persons of accomplishment, intelligence, integrity, and leadership ability to pursue challenging academic careers.
- Dr. Duane Koenig '53 received an honorary Doctor of Humane Letters at May Commencement for his distinguished career in family medicine and general surgery and medical mission work in Tanzania.

Wartburg continues to deliver on a vibrant mission that transforms the entire college community as together we learn, serve, and demonstrate care for each other. Thank you for your prayerful support of our efforts to strengthen Lutheran higher education and our community of learning.

Dr. Rebecca Ehretsman, President